

# Switch from Gas and Start Saving



Heat your home for up to 46%\* less than gas and improve your indoor air quality by switching to a Daikin.



\*Calculations based on price data from finder.com.au



## The price of gas is on the rise

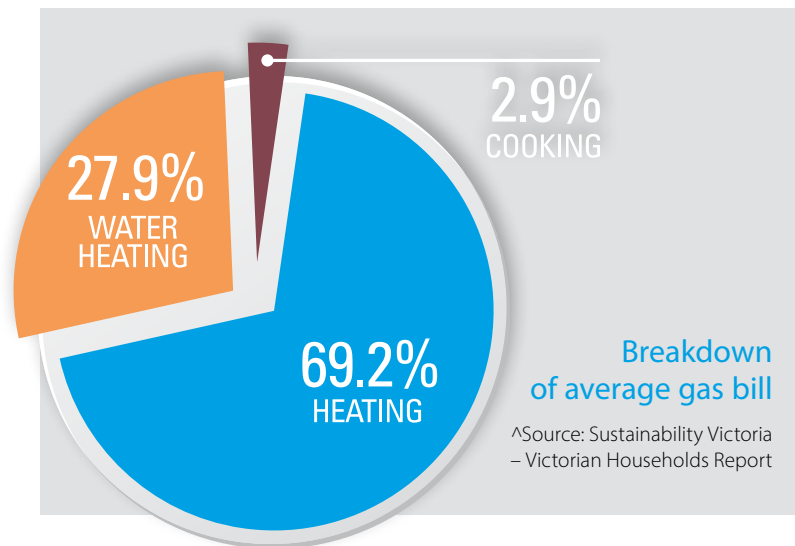


## The answer to rising gas heating bills

### The price of gas in Australia has increased sharply in recent years.

And that's not about to end. As global demand for this finite resource surges, experts are predicting that prices will continue to rise for years to come.

When we consider that gas heating makes up nearly 70% of our total gas bill<sup>1</sup>, the certainty of rising gas prices is concerning.



### Daikin has a range of products to suit both single room and whole house heating requirements to help reduce your energy bills.

When you switch to a Daikin Split or Ducted system to heat your home, you'll save on your energy bill, depending on which Australian state you live in. Victorian households, for example, can save up to 46% by using a heat pump system for heating a single room.

### The figures really stack up

Our Daikin Research & Development Team compared the average running cost of a floor gas heater versus a Daikin Heat Pump system. The comparison was based on delivering near identical heating output and running times from both options and calculating the respective running costs.

#### Product running cost comparison – Victorian example

| Gas Heater  | VS                         | Daikin Heat Pump       | =                           |
|---|----------------------------|------------------------|-----------------------------|
| Unit Specs  |                            | Alira X FTXM50W/RXM50W | Daikin Heat Pumps are up to |
| Output of Gas Heater  | 4.5 Star Room Space Heater | 6 kW                   | <b>46%</b>                  |
| Heating Hours (1 Year)  | 6.3 kW                     | 1306 hrs               | cheaper to run than         |
| Gas consumption over 1306 hours <sup>1</sup>                    | 1306 hrs                   | 1705 kW/h              | gas heating                 |
| Gas cost <sup>2</sup>   | 35,915 Mj                  | 28.45c/kW/h            |                             |
| Additional electricity costs (i.e. fan and control electronics) | 2.42c/ Mj                  | \$0                    |                             |
| Total gas cost  | \$22.29                    | \$485.07               |                             |
| <b>TOTAL RUNNING COST</b>                                       | <b>\$869.14</b>            | <b>\$485.07</b>        |                             |

<sup>1</sup>Heating hours are calculated as defined by AS/NZS 3823.4.2:2014

<sup>2</sup>Gas cost from finder.com.au/cost-of-gas accessed 2/04/2024

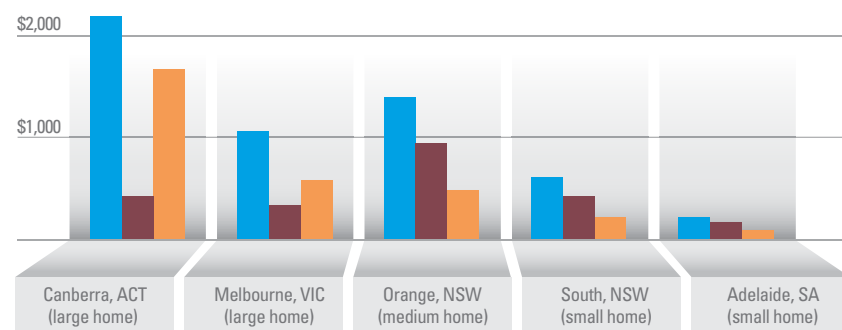
<sup>3</sup>Electricity cost from finder.com.au/average-cost-of-electricity accessed 2/04/2024

### The good news

The good news is that you have the power to offset rising gas prices by turning to an efficient and potentially more affordable alternative - electricity. When generated from wind or solar, electricity not only serves as a sustainable solution but also contributes to our collective effort towards a cleaner environment and lower carbon footprint. Even better, the transition to electricity can lead to cost savings over time, making it a smart choice for your home heating needs. Making the switch to electricity is a win for your wallet and the environment.

#### Savings when switching from gas heating to a heat pump air conditioner

Source: Alternative Technology Association





# We're in good hands

While the possible savings make the decision to switch easier, the increased cost of living and other economic pressures can make it hard know when is the best time to switch.

Fortunately, Australian governments and regulatory bodies are recognising the need for urgent and ongoing action to protect households from increasing energy costs. These bodies recognise that an upgrade now will save people money in the long run and are focused on assisting households with their upgrade decisions.

## Government rebates and incentives for heating and cooling

A number of state-based rebates became available in 2023 with more on the way. The programs provide rebates of varying values to residents who upgrade from gas heating to reverse-cycle air conditioning.

Scan to see the rebates available in your state



# Daikin has you covered

Once you've made the decision to switch, the next thing to decide is the type of air conditioning solution best suited for your home and your family's needs.

Daikin's available solutions covers a wide range of house configurations and can be paired with Daikin controls to give you precise control of your comfort.

## Perfecting the air with sustainable solutions

When you upgrade to a new Daikin system, you are taking a positive step towards a smaller carbon footprint. Our newest systems contain R32 refrigerant which has a lower global warming potential than older systems and can deliver more efficient heating and cooling.

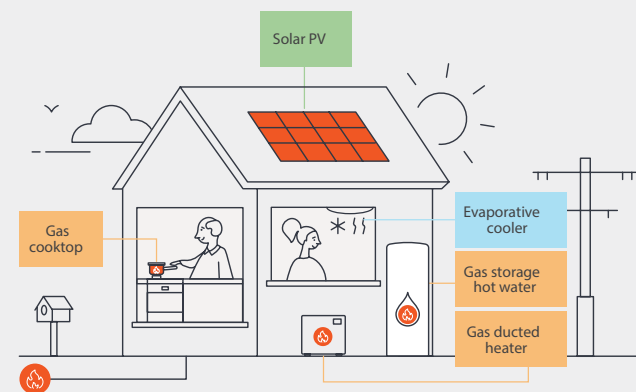
# Choose the right system for your home

## Victoria's Gas Substitution Roadmap

The Victorian Government, in particular, is actively working to lead a shift towards electricity and other alternatives to gas by providing a range of supports through its Gas Substitution Roadmap. The roadmap outlines how the state will use energy efficiency and electrification to drive down bills and cut carbon emissions.

Some encouraging data released as part of the roadmap shows that Victorians who substitute gas for electricity can make significant savings, particularly for heating and cooling.

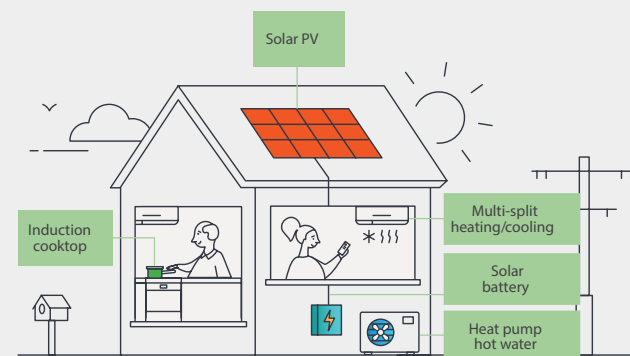
### Dual-fuel:



## Energy Bill Savings (All Electric vs Dual Fuel)

|                                |                       |
|--------------------------------|-----------------------|
| Heating/cooling savings        | \$570 per year        |
| Additional solar savings       | \$230 per year        |
| <b>TOTAL POTENTIAL SAVINGS</b> | <b>\$800 per year</b> |

### All-electric:



## Single Room

Heat Pump systems are a 1:1 connection between an indoor unit and an outdoor unit.

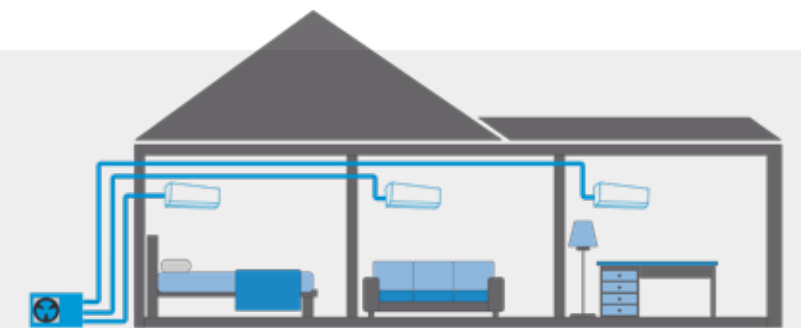
Learn more on page 5.



## Whole House – Multiple Rooms

Multi-split Heat Pump systems connect multiple indoor units to one outdoor unit.

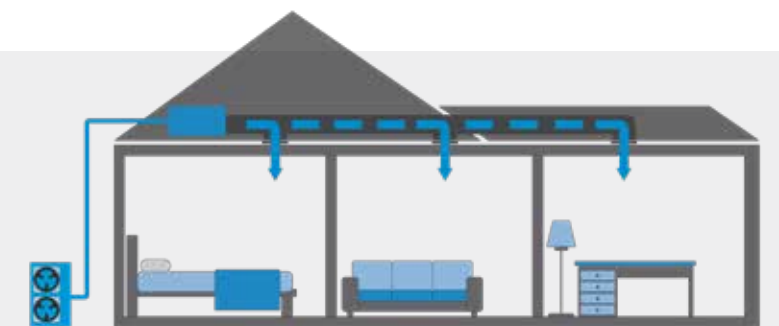
Learn more on page 10.



## Whole House – In Ceiling

Ducted Heat Pump Systems are a 1:1 connection between an indoor unit to an outdoor unit and conditioned air is delivered to multiple rooms through ductwork.

Learn more on page 12.



# Why Daikin?

It's not just financial savings that you'll enjoy when switching to a Daikin Heat Pump System.

By using air conditioning to heat your home, you'll be able to improve your home comfort by maintaining optimal temperature and humidity levels.

While these can be great short term benefits, there can be a lot more to home comfort than just what we feel on our skin. The very air we breathe contributes to our comfort and impacts our health and wellbeing in the long term.

As Air Specialists, we're passionate about designing products, like the Alira X with Streamer Technology, that go the extra step towards making sure your air is pure and clean.

By choosing a Daikin, you can rest assured you are making an investment into your future, backed by a brand that has been innovating and building home-grown products in Australia for the past 50 years. A wise choice to give you the best for your home comfort, your well-being and your financial future.



**Choose a winner**

Daikin is the back to back winner of Australia's Most Trusted Brand for Air Conditioners! We're proud that thousands of Australians put their trust in our brand!

# Heat Pump System Overview

Did you know that Daikin's reverse cycle air conditioners can both heat and cool your home for optimal year round comfort.

Daikin Alira X, Zena and XL Premium are standout models because they not only heat your home, they purify the air at the same time! It's all thanks to Streamer Technology.

## Alira X

2.2kW to 7.1kW (7 models)

Alira X is a step ahead of the rest, delivering a perfect fusion of whisper quiet comfort, industry leading energy efficiency and indoor air quality technology.

### Key features

- 2-Area Intelligent Eye (20-46 Class only)
- Intelligent Eye (50-71 Class only)
- Enzyme Blue Deodorising Air Purification Filter
- Streamer Technology
- Mould Proof Operation
- Built-in Wi-Fi



| STAR RATING                     | CAPACITY (kW) | 2.2         | 2.5       | 3.5         | 4.6         | 5.0       | 6.0         | 7.1         |
|---------------------------------|---------------|-------------|-----------|-------------|-------------|-----------|-------------|-------------|
| ZERL (Residential) Hot/Avg/Cold | COOL          | 6/5.5/5.5 ★ | 6/5.5/6 ★ | 5/5/5 ★     | 4.5/4/4.5 ★ | 5.5/5/5 ★ | 4.5/4.5/5 ★ | 4/3/3.5 ★   |
|                                 | HEAT          | 3.5/3.5/3 ★ | 4/3.5/3 ★ | 3.5/3.5/3 ★ | 4/3.5/3 ★   | 4/3.5/3 ★ | 4/3/2.5 ★   | 3.5/3/2.5 ★ |

## Maximum performance, comfort and efficiency.

### Market-leading Streamer Technology

A number of our Heat Pump Systems include Streamer Technology – our market-leading air purification system has been independently verified and tested to remove;

**STREAMER**

- ALLERGENS** MORE THAN 99.61%\* IN 24 HOURS
- POLLEN** MORE THAN 99.6%\* IN 2 HOURS
- MOULD** MORE THAN 99.9%\* IN 24 HOURS
- BACTERIA**
- FORMALDEHYDE**
- ODOURS**

\*See daikin.com.au/streamer for details



## Zena

2.5kW to 6.0kW (8 models)

Stylish designer model engineered with the latest technology and built-in Wi-Fi capability. Available in White Hair Line or Black Wood finish.

### Key features

- Ultra Compact Design
- Streamer Technology
- Intelligent Eye
- Grid Eye Sensor
- Vertical Airflow
- Built-in Wi-Fi

| STAR RATING                     | kW   | 2.5         | 3.5           | 5.0       | 6.0           |
|---------------------------------|------|-------------|---------------|-----------|---------------|
| ZERL (Residential) Hot/Avg/Cold | COOL | 4/3.5/3.5 ★ | 3.5/3.5/3.5 ★ | 3.5/3/3 ★ | 2.5/2.5/2.5 ★ |
|                                 | HEAT | 3/3/2.5 ★   | 3/2.5/2 ★     | 3/2.5/2 ★ | 3/2.5/2 ★     |



## XL Premium

8.5kW to 9.5kW (2 models)

Powerful performance and premium features meet sophisticated design to deliver ultimate comfort for open plan living.

### Key features

- Intelligent Eye
- Enzyme Blue Deodorising Air Purification Filter
- Streamer Technology
- Built-in Wi-Fi
- Mould Proof Operation

| STAR RATING                     | kW   | 8.5           | 9.5           |
|---------------------------------|------|---------------|---------------|
| ZERL (Residential) Hot/Avg/Cold | COOL | 3.5/3.0/3.5 ★ | 3.5/3.0/3.0 ★ |
|                                 | HEAT | 2.5/2.0/2.0 ★ | 2.5/2.0/1.5 ★ |

Note: Reverse Cycle results shown

### The Coanda Effect

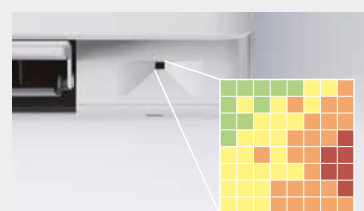
The Coanda effect optimises the airflow for a comfortable climate. By using specially designed louvres, a more focused airflow allows a better temperature distribution throughout the whole room.



Note: Applicable to selected models.

### Grid Eye Sensor

The Grid Eye Sensor detects the surface temperature of a room to create a more comfortable climate. After determining the current room temperature, the intelligent thermal sensor distributes air evenly throughout the room before switching to an airflow pattern that directs warm air to areas that need it.



Note: Only available on Zena models.

# Discover the rest of our range

## Floor Standing

**NEW!**

2.5kW to 7.1kW (6 models)

Compact floor standing unit, ideal for colder climates and placement under a window sill or semi-recessed in an unused fireplace.

### Key features

- > Heat Boost for improved heating performance
- > Heat Plus Mode
- > Floor Warming Mode
- > Built-in Wi-Fi
- > Streamer Technology
- > Enzyme Blue Deodorising Air Purification Filter
- > Mould Proof Operation



| STAR RATING                     | CLASS | 25        | 35            | 45        | 50        | 60            | 71            |
|---------------------------------|-------|-----------|---------------|-----------|-----------|---------------|---------------|
| ZERL (Residential) Hot/Avg/Cold | COOL  | 3.5/3/3 ★ | 4.5/3.5/3.5 ★ | 3.5/3/3 ★ | 3/3/3 ★   | 4.5/3.5/3.5 ★ | 4.5/3.5/3.5 ★ |
|                                 | HEAT  | 3/2.5/2 ★ | 3.5/3/2.5 ★   | 3/2.5/2 ★ | 3/2.5/2 ★ | 3.5/3/2.5 ★   | 3/2.5/2.5 ★   |

## Cora

2.0kW to 7.1kW (7 models)

Delivered in understated confidence, the Cora series comes fully featured with whisper quiet operation and without compromise on style.

### Key features

- > 2-Area Intelligent Eye (20-46 Class only)
- > Intelligent Eye (50-71 Class only)
- > Enzyme Blue Deodorising Air Purification Filter
- > Coanda Airflow
- > Compact Form Factor



| STAR RATING                     | CAPACITY (kW) | 2.0         | 2.5         | 3.5         | 4.6         | 5.0         | 6.0         | 7.1       |
|---------------------------------|---------------|-------------|-------------|-------------|-------------|-------------|-------------|-----------|
| ZERL (Residential) Hot/Avg/Cold | COOL          | 5.5/4.5/5 ★ | 6/5.5/5.5 ★ | 5/4.5/5 ★   | 4/3.5/4 ★   | 5/4.5/5 ★   | 4/4/4 ★     | 3.5/3/3 ★ |
|                                 | HEAT          | 3/3/2.5 ★   | 3.5/3/3 ★   | 3/2.5/2.5 ★ | 3/2.5/2.5 ★ | 3.5/3/2.5 ★ | 3.5/3/2.5 ★ | 3/2.5/2 ★ |

## XL

8.0kW to 9.0kW (2 models)

Combining high capacity performance with a sleek design to ensure comfort in open plan living environments.

### Key features

- > Intelligent Eye
- > Enzyme Blue Deodorising Air Purification Filter
- > Mould Proof Operation



| STAR RATING                     | kW   | 8.0           | 9.0           |
|---------------------------------|------|---------------|---------------|
| ZERL (Residential) Hot/Avg/Cold | COOL | 3.5/3.0/3.5 ★ | 3.0/3.0/3.0 ★ |
|                                 | HEAT | 2.5/2.0/1.5 ★ | 2.5/2.0/1.5 ★ |

## Mobile Controller

Wi-Fi control for your Daikin wall-mounted Heat Pump

Mobile Controller puts your air conditioner's frequently used functions at your fingertips with an easy-to-use app. It is available for download, free from the Apple App Store or Google Play.

| FUNCTION                  | ZENA | ALIRA X | CORA | XL PREMIUM | XL | FLOOR STANDING |
|---------------------------|------|---------|------|------------|----|----------------|
| Start/stop operation      | ✓    | ✓       | ✓    | ✓          | ✓  | ✓              |
| Set operation mode:       | ✓    | ✓       | ✓    | ✓          | ✓  | ✓              |
| Auto/Cool/Heat/Fan/Dry    | ✓    | ✓       | ✓    | ✓          | ✓  | ✓              |
| Set temperature operation | ✓    | ✓       | ✓    | ✓          | ✓  | ✓              |
| Set fan speed             | ✓    | ✓       | ✓    | ✓          | ✓  | ✓              |
| Set airflow direction     | ✓    | ✓       | ✓    |            |    | ✓              |
| Show room temperature     | ✓    | ✓       | ✓    | ✓          | ✓  | ✓              |
| Group control             | ✓    | ✓       | ✓    | ✓          | ✓  | ✓              |
| Error notification        | ✓    | ✓       | ✓    | ✓          | ✓  | ✓              |
| Set weekly schedule:      |      |         |      |            |    |                |
| - Start/stop operation    |      |         |      |            |    |                |
| - Select operation mode   | ✓    | ✓       | ✓    | ✓          | ✓  | ✓              |
| - Set temperature         |      |         |      |            |    |                |
| Maximum 6 actions per day |      |         |      |            |    |                |
| Vacation mode             | ✓    | ✓       | ✓    | ✓          | ✓  | ✓              |

Note: Additional wiring adaptor required for select models.



Google/Amazon Smart Speaker and Home Automation Ecosystem Purchased Separately





# Multi-Split Heat Pump System Overview

Daikin Multi-Split Heat Pump systems can heat or cool multiple rooms using only one outdoor unit connected to multiple indoor units. Each indoor unit can also be individually controlled, scheduled and set to the desired room temperature allowing you to have precise control over the comfort of each room.



Note: Unit operates in either heating or cooling mode

## Outdoor units

### Key features

- > Connects up to 5 indoor units
- > Up to 181% indoor heads connectable of rated capacity
- > Outdoor Unit Night Time Quiet Mode



| TYPE          | MODEL NUMBER | CAPACITY | MAX CONNECTED INDOOR UNIT CAPACITY |
|---------------|--------------|----------|------------------------------------|
| Reverse Cycle | 3MXM52R2VMA  | 5.2kW    | 9.0kW                              |
|               | 4MXM68R2VMA  | 6.8kW    | 11.0kW                             |
|               | 4MXM80R2VMA  | 8.0kW    | 14.5kW                             |
|               | 5MXM100R2VMA | 10.0kW   | 15.6kW                             |

## Indoor units

### WALL MOUNTED

### Key features

- > Intelligent Eye
- > Air Purification with Streamer Technology\*
- > Heating Grid Eye Sensor\*
- > Coanda Airflow for improved comfort

\*CTXJ-TVMAW models only

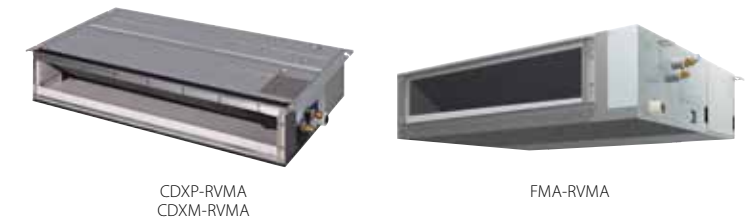


| TYPE          | MODEL NUMBER | CAPACITY (kW) |     |     |     |     |     |     |     |     |
|---------------|--------------|---------------|-----|-----|-----|-----|-----|-----|-----|-----|
|               |              | 2.0           | 2.5 | 3.5 | 4.6 | 5.0 | 6.0 | 7.1 | 8.5 | 9.5 |
| Reverse Cycle | CTXM-RVMA    |               | ✓   | ✓   | ✓   | ✓   | ✓   | ✓   | ✓   | ✓   |
|               | CTXJ-TVMAW   |               | ✓   | ✓   |     | ✓   | ✓   |     |     |     |

## BULKHEAD & DUCTED

### Key features

- > Compact height for versatile installations
- > Perfect for bulkhead installations



| TYPE          | MODEL NUMBER | CAPACITY (kW) |     |     |     |     |     |     |     |     |
|---------------|--------------|---------------|-----|-----|-----|-----|-----|-----|-----|-----|
|               |              | 2.0           | 2.5 | 3.5 | 4.6 | 5.0 | 6.0 | 7.1 | 8.5 | 9.5 |
| Reverse Cycle | CDXP-RVMA    |               | ✓   | ✓   |     |     |     |     |     |     |
|               | CDXM-RVMA    |               | ✓   | ✓   |     | ✓   | ✓   | ✓   |     |     |
|               | FMA-RVMA     |               |     |     |     | ✓   | ✓   | ✓   |     |     |

## CASSETTE

### Key features

- > Hot start function, perfect to prevent cold draughts on start-up
- > Flat design for discreet installation
- > Versatile installation with adjustable air discharge patterns



| TYPE          | MODEL NUMBER | CAPACITY (kW) |     |     |     |     |     |     |     |     |
|---------------|--------------|---------------|-----|-----|-----|-----|-----|-----|-----|-----|
|               |              | 2.0           | 2.5 | 3.5 | 4.6 | 5.0 | 6.0 | 7.1 | 8.5 | 9.5 |
| Reverse Cycle | FFA-RV1A     |               | ✓   | ✓   |     | ✓   | ✓   |     |     |     |

Note: For compatible controller options, please see below.

## Multi System Control Options



**Wireless Controller**  
(BRC086A21)  
– optional for Cassette

Note: BRC086A2R2 wireless receiver kit required for each indoor cassette.



**Wired Controller**  
(BRC073A4)

Note: Additional wiring adaptor required



**Mobile Controller - for wireless app control**

(BRP072C42)  
– optional for all

Note: Additional wiring adaptor required on select models.



# Ducted System Overview

## Premium Inverter Ducted

7.1kW to 16.0kW (6 models)

Engineered with the latest technology innovations including R32 refrigerant, the Premium Inverter series offers market-leading energy performance and design flexibility.

### Key features

- > Superior energy performance
- > Night Quiet Mode
- > Operates down to 15°C (wb)

| SEASONAL ENERGY PERFORMANCE | CAPACITY (kW) | 7.1            | 8.5            | 10.0           | 12.5           | 14.0           | 16.0           |
|-----------------------------|---------------|----------------|----------------|----------------|----------------|----------------|----------------|
| Residential (Hot/Avg/Cold)  | TCSPF         | 5.21/4.52/4.58 | 4.90/4.32/4.39 | 4.69/4.23/4.27 | 4.57/4.18/4.26 | 5.00/4.55/4.69 | 4.77/4.38/4.56 |
|                             | HSPF          | 3.87/3.80/3.51 | 4.20/3.95/3.54 | 4.43/4.07/3.62 | 4.43/3.92/3.36 | 4.11/3.67/3.16 | 3.96/3.65/3.21 |



## Inverter Ducted

5.0kW to 15.5kW (14 models)

Engineered to deliver a compact and efficient design, the new Inverter series is ideal for installation in the tight roof space of any modern home.

### Key features

- > Compact indoor unit
- > Space saving outdoor unit
- > Night Quiet Mode
- > Automatic Airflow Adjustment

| SEASONAL ENERGY PERFORMANCE | CAPACITY (kW) | 5.0            | 6.0            | 7.1            | 8.5            | 10.0           | 12.5           | 14.0           | 16.0           |
|-----------------------------|---------------|----------------|----------------|----------------|----------------|----------------|----------------|----------------|----------------|
| Residential (Hot/Avg/Cold)  | TCSPF         | 4.43/3.74/3.68 | 4.36/3.77/3.78 | 4.43/3.88/3.94 | 4.29/3.85/3.90 | 4.28/3.88/3.97 | 4.26/3.91/4.02 | 4.19/3.87/3.97 | 4.05/3.76/3.87 |
|                             | HSPF          | 4.51/4.02/3.49 | 4.46/3.76/3.15 | 4.17/3.85/3.41 | 3.97/3.67/3.32 | 3.85/3.48/3.04 | 4.31/3.31/2.77 | 3.90/3.51/3.05 | 3.87/3.53/3.12 |



# Control at your fingertips

A range of Daikin controls can be used with all of our ducted systems giving you the power to control your comfort virtually anywhere.



### Nav Ease Controller

A simple controller providing useful functions such as weekly schedule timer, on and off time setting and Quick Cool and Heat modes.



### Zone Controller

Turn the air conditioner on or off in separate rooms or zones in your house with Zone Controller.

## AirHub Controller

Contemporary design with intuitive controls to deliver precise temperature control & comfort.

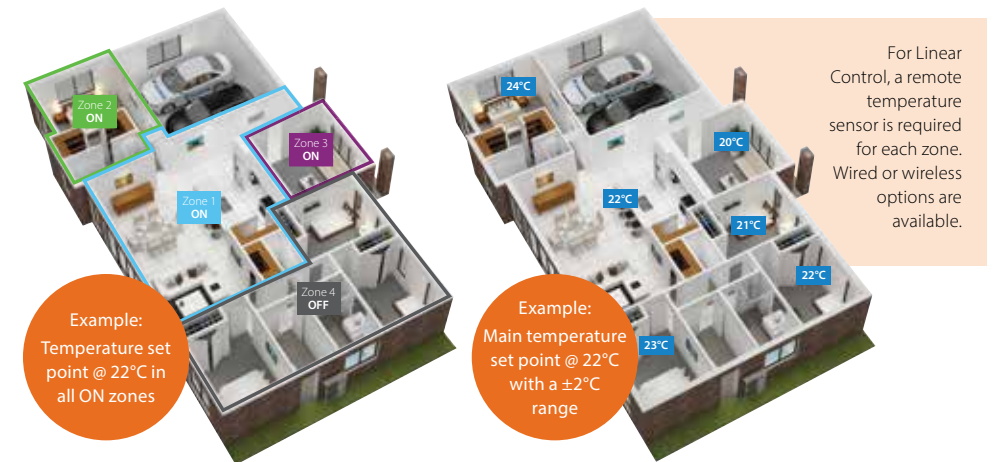


### On/Off Zone Control

Allows users to select which zones to deliver conditioned air, leaving off unoccupied zones.

### Linear Zone Control

Users can switch on and off zones and also control zone temperatures within  $\pm 2^\circ\text{C}$  of the main setpoint temperature.



For Linear Control, a remote temperature sensor is required for each zone. Wired or wireless options are available.



## Airbase Controller

Airbase allows you to enjoy WiFi mobile control when used with Zone Controller or AirHub Controller. It also integrates with Google Home and Amazon Alexa smart home systems.



© Copyright in the contents of this brochure is owned by Daikin Australia Pty Limited and no part of the document may be reproduced in any form without the express written permission of Daikin Australia Pty Limited.

## ASSUMPTIONS

All representations made in Daikin marketing and promotional material are based on the assumptions that the correct equipment has been selected, appropriately sized and installed in accordance with Daikin's installation instructions and standard industry practices.

## QUALITY CERTIFICATIONS

Daikin Industries Limited was the first air conditioning equipment manufacturer in Japan to receive ISO 9001 certification. All Daikin manufacturing facilities have been certified to ISO 9001 Quality Management System requirements. ISO 9001 is a certificate for quality assurance concerning 'design, development, manufacturing, installation and related service' of products manufactured at that factory.

**Residential Air Conditioning**  
 Manufacturing Div (ISO 9001)  
 JQA-0486 May 2, 1994  
 (Shiga Plant)

**Commercial Air Conditioning and Refrigeration**  
 Manufacturing Div (ISO 9001)  
 JMI0107 December 28, 1992  
 (Kanaoka Factory and Rinkai Factory at Sakai Plant)

## ENVIRONMENTAL CERTIFICATIONS

Daikin Industries Limited has received ISO 14001 Environmental Certification for the Daikin production facilities listed below. ISO 14001 is an international standard specifying requirement for an environmental management system, enabling an organisation to formulate policy and objectives, taking into account legislative requirements and information about significant environmental impacts. It applies to those environmental aspects within the organisation's control and over which it can be expected to have an influence.

The certification relates only to the environmental management system and does not constitute any endorsement of the products shipped from the facility by the International Organisation for Standardisation.

|                                  |                                 |
|----------------------------------|---------------------------------|
| Head Office / Tokyo Office       | Certificate number: EC02J0355   |
| Shiga Plant (Japan)              | Certificate number: EC99J2044   |
| Sakai Plant (Japan)              | Certificate number: JQA-E-80009 |
| Daikin Industries Ltd (Thailand) | Certificate number: JQA-E-90108 |
| Yodogawa Plant (Japan)           | Certificate number: EC99J2057   |
| Daikin Australia Pty. Ltd.       | Certificate number: CEM20437    |

**Daikin Australia Pty Limited (ISO 9001)**



QEC 23256  
 May 12, 2006  
 Sydney, Brisbane, Adelaide, Melbourne, Newcastle, Townsville, Perth

**Daikin Australia Pty Limited (ISO 45001)**



OHS 20939 17  
 February 2021  
 Sydney

**Daikin Australia Pty Limited (ISO 14001)**



CEM 20437  
 October 27, 2006  
 Sydney, Brisbane, Adelaide, Melbourne, Perth

**Industrial System and Chiller Products Manufacturing Div (ISO 9001)**

JQA-0495 May 16, 1994  
 (Yodogawa Plant and Kanaoka Factory and Kishiwada Factory)

**Daikin Europe N.V (ISO 9001)**

Lloyd 928589.1 June 2, 1993

**Daikin Industries (Thailand) Ltd**

JQA-1452 September 13, 2002  
 (ISO 9001)



## CONTACT



Daikin Australia Pty Limited ABN 62 000 172 967

For all Sales enquiries, email: sales@daikin.com.au

For Customer Service or Technical Support, call: 1300 368 300

Stay Connected!     

Visit [daikin.com.au](http://daikin.com.au)